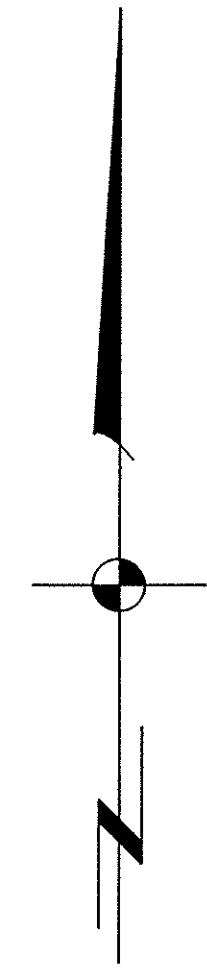
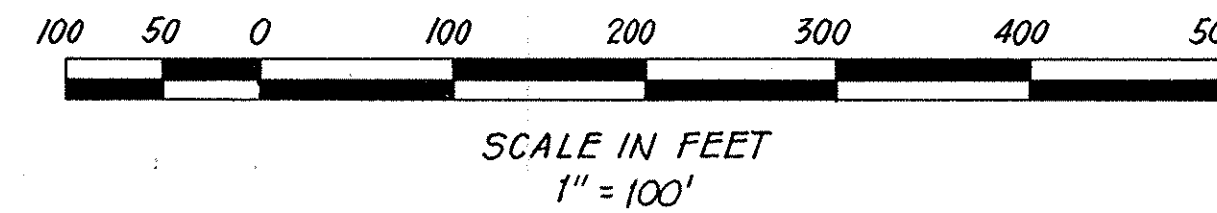


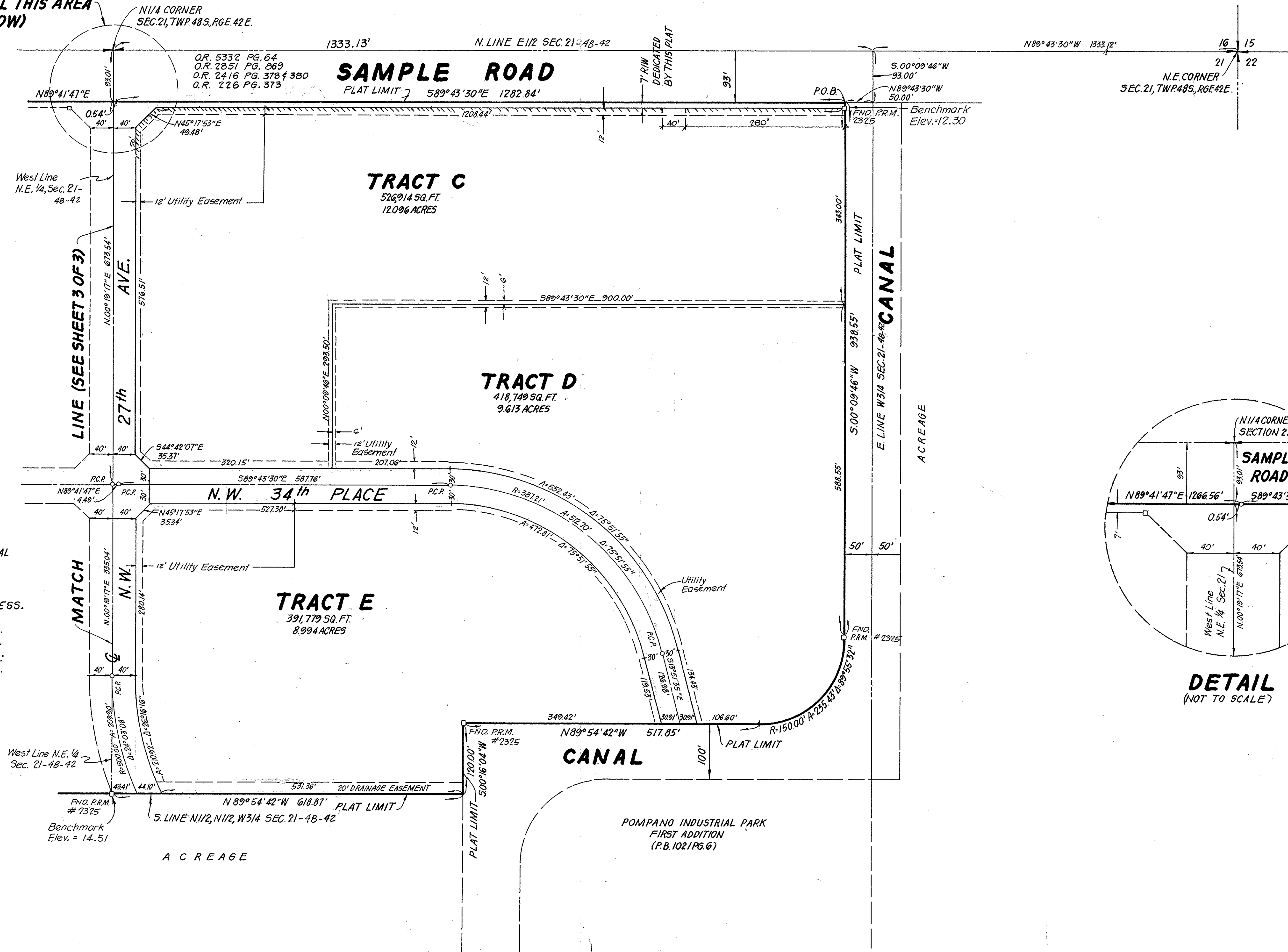
POMPANO INDUSTRIAL PARK THIRD ADDITION

A PARCEL OF LAND IN SECTION 21, TOWNSHIP 48 SOUTH, RANGE 42 EAST
BROWARD COUNTY, FLORIDA

PREPARED BY:
KEITH AND SCHNARS, P.A.
ENGINEERS · PLANNERS · SURVEYORS
1115 N.E. 4TH AVENUE
FORT LAUDERDALE, FLORIDA



SEE DETAIL THIS AREA
(BELOW)



SURVEY NOTES:

1. **PRM.** INDICATES PERMANENT REFERENCE MONUMENT.
2. **PCP.** INDICATES PERMANENT CONTROL POINT.
3. SURVEY DATA IN FIELD BOOK 2064 PAGE 32-34
4. ELEVATIONS SHOWN HEREON ARE BASED ON THE NATIONAL GEODETIC VERTICAL DATUM OF 1929.
5. BEARINGS SHOWN HEREON ARE BASED ON POMPANO INDUSTRIAL PARK FIRST ADDITION (P.B. 102, PG. 6).
6. **---** INDICATES LINE OF NON-VEHICULAR ACCESS.
7. AREA TABULATION:

Tracts A thru G	3,261,541 sq. ft.	74.8747 Ac.
Internal R/W	307,153 sq. ft.	7.0512 Ac.
T/R/W Sample Rd.	18,177 sq. ft.	0.4173 Ac.
TOTAL	3,586,871 sq. ft.	82.3432 Ac.

P&Z

PZ22-92000001

4/27/2022

6999C